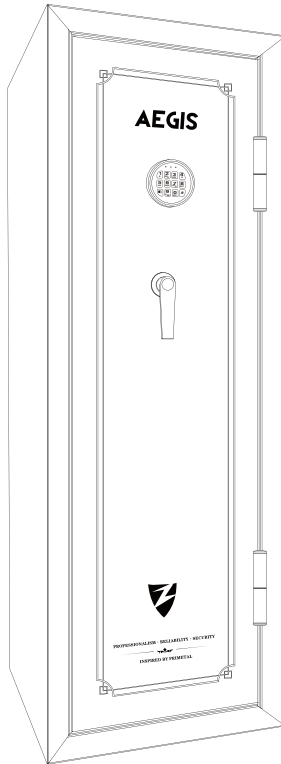


AEGIS

Instruction Manual



55PMD18

IMPORTANT NOTICES

1. Do not leave safe unattended while open.
2. Keep Children Away from safe.
3. Keep your safe locked and closed at all times when not in use, to avoid children being accidentally locked in safe.
4. Place your safe in a cool and dry location.
5. Remember to record the serial number of your safe from the tag on the front of your safe. You will need this serial number for all warranty or customer service inquiries.
6. Electronic media, photographic media and all audio-visual media should not be stored in the safe for fire protection. These materials will not survive the rated internal temperature of the safe and may be damaged or destroyed.

WARNING

Safe must be secured as detailed in these instructions. A child or Adult can tip the safe and can be killed or seriously injured. Failure to secure the safe can result in death or serious injury.

BATTERY INSTALLATION AND REPLACEMENT

You must first install the battery which is located in the front protective styrofoam.

Batteries included: E-lock (1x9Volt)

To replace the battery, remove the cover by pressing the tab and turning as shown in the illustration (counter clockwise).

Install new battery and align cover and install cover (clockwise).



OPENING THE SAFE

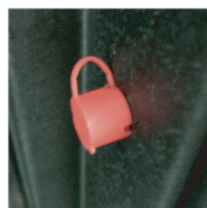
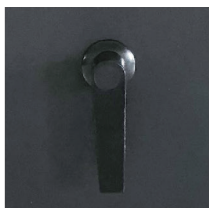
Enter Factory Pass Code : 1 - 5 - 9 - #and turn the handle clockwise.

SETTING THE PASSCODE & PASSCODE RESET

After opening the safe, locate the small red button on the inside of the door, near the hinge. Remove the cap and press the red button until you hear two beeps. You will see a yellow light on the front faceplate. Enter your new passcode (minimum of 3, to a maximum of 8 digits) while the yellow light is illuminated, then press #. The yellow light flashes twice with two beeps, that means your passcode is successfully set.

Before closing door, make sure your new passcode is functional.

Enter your new passcode and press # and you will see a green light on your front faceplate.



Low Battery Warning Indicator

If after entering your correct passcode and pressing #, you see a red-light on your front faceplate, this indicates your battery is low and needs to be replaced. Please follow instructions for battery installation and replacement.

Back up key

Remove the cover by pressing the tab and turning the cover under battery installation. Insert the key in the key hole and turn key ¼ turn (until stopped) to unlock the safe. Rotate the handle and open the door.



Safes with the Alarm-U™ system

Press “0” for three seconds to activate the Alarm-U™ system. If the safe is tampered with, the alarm will sound for 30 seconds. To stop the alarm from sounding, enter the correct passcode.

After tampered alarm, please enter “0” to activate the Alarm-U™ system again.

If 3 incorrect passcode entries are made in succession, the alarm will sound and the safe will be in automatic lockout for 30 seconds.

If 3 more failed attempts are entered, the keypad will be in lockout for 5 minutes, the after any lockout time end. You can use your back up key at any time to open the safe.

Turning the keypad sound off/on with Mute-U™ system

You can mute/unmute the keypad by entering the button  .

LOCKING THE SAFE

Close the door and turn the handle to the lock position.

WARNING: Do not leave safe unattended while open, and keep children away from safe.

SECURING THE SAFE

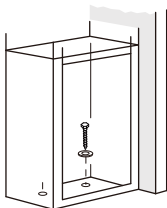
This safe must be mounted to the floor. Failure to do so will compromise the safety, security and warranty of the safe. Place your safe in a cool and dry location.

HARDWARE INCLUDED

M10×70 Lag screws
Gasket washers
Plastic anchors

TOOLS REQUIRED

Drill
3/8" drill bit
5/16" drill bit
7/16" drill bit
17mm socket wrench
Phillips screwdriver



As all installation may vary, please contact your local Hardware Professional for additional installation recommendations.

For Customer Service needs, please contact us at:

E-mail: service@primetalsafe.com

Primetal LLC.

Office: 1150 S Milliken Ave, #1082, Ontario, CA91761, United States

www.primetalsafe.com

Remember to record the serial number of your safe from the tag on the front of your safe. You will need this serial number for customer service inquiries.

Primetal Security Products